

Akaya

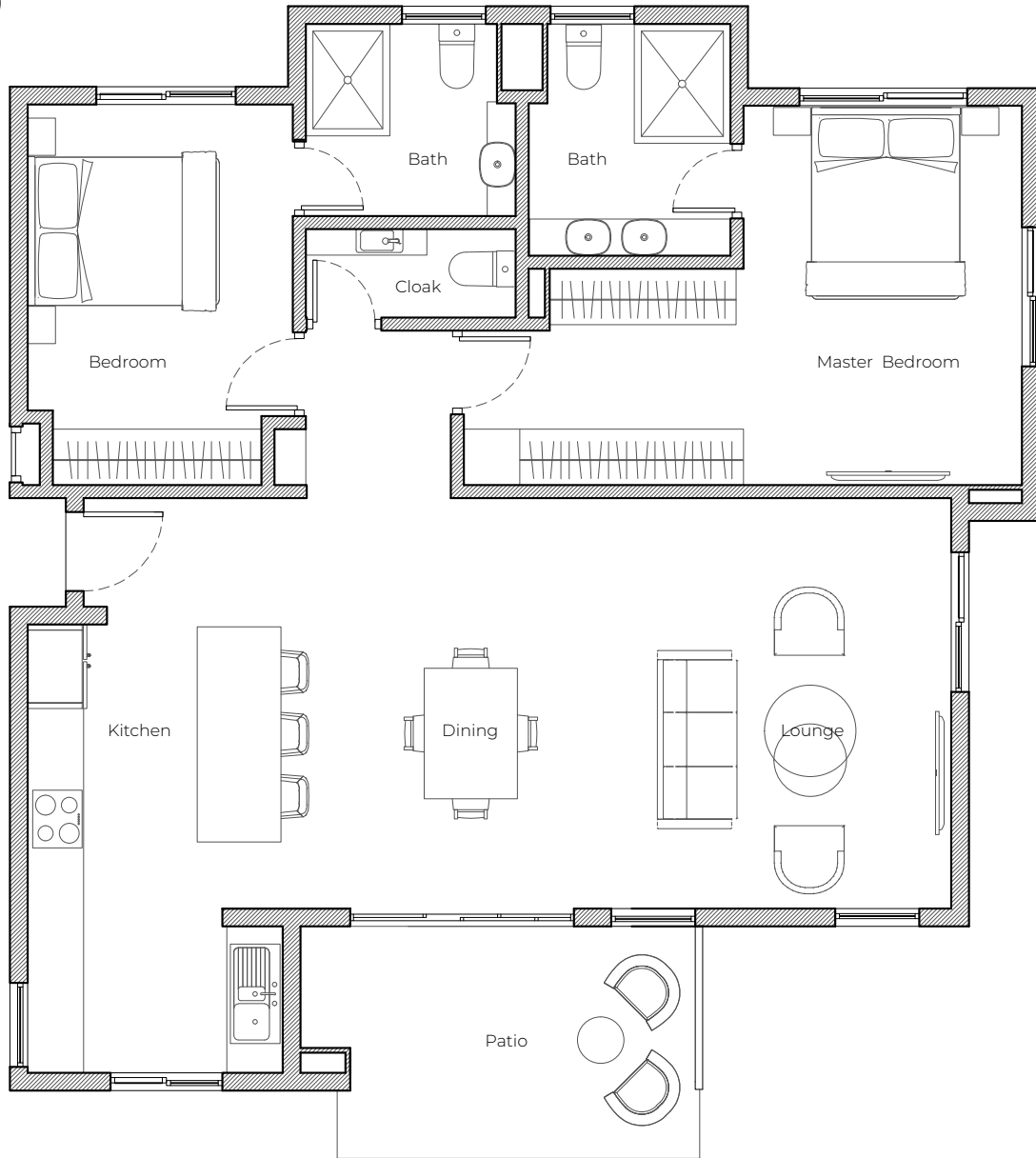
by TRASACCO



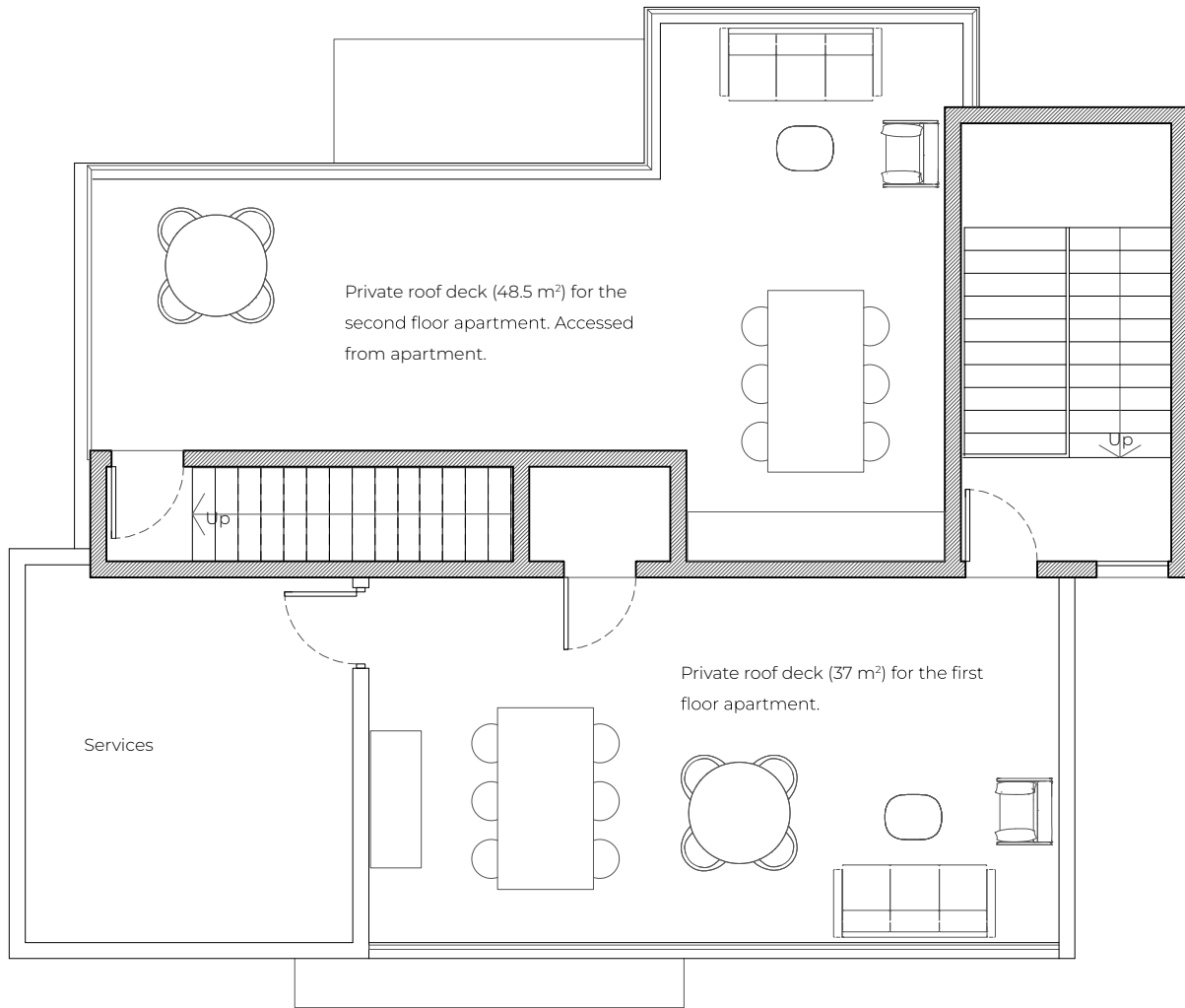
TRASACCO
30 Year Legacy

TWO BEDROOM APARTMENTS

(115.5m²)

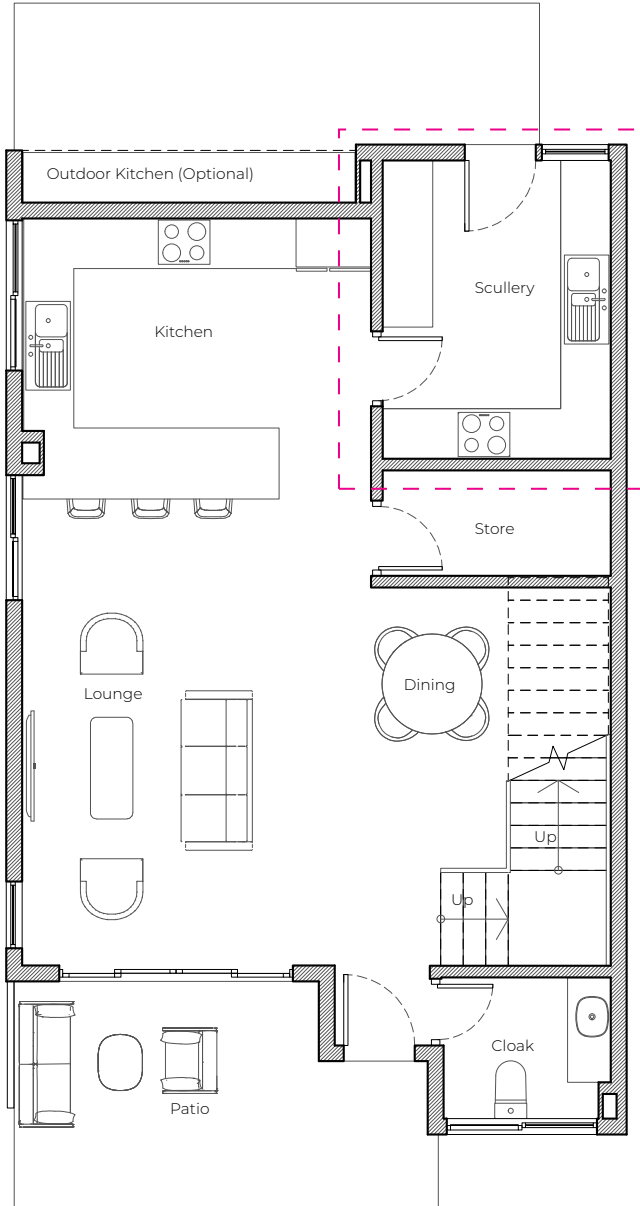


Typical Floor Plan

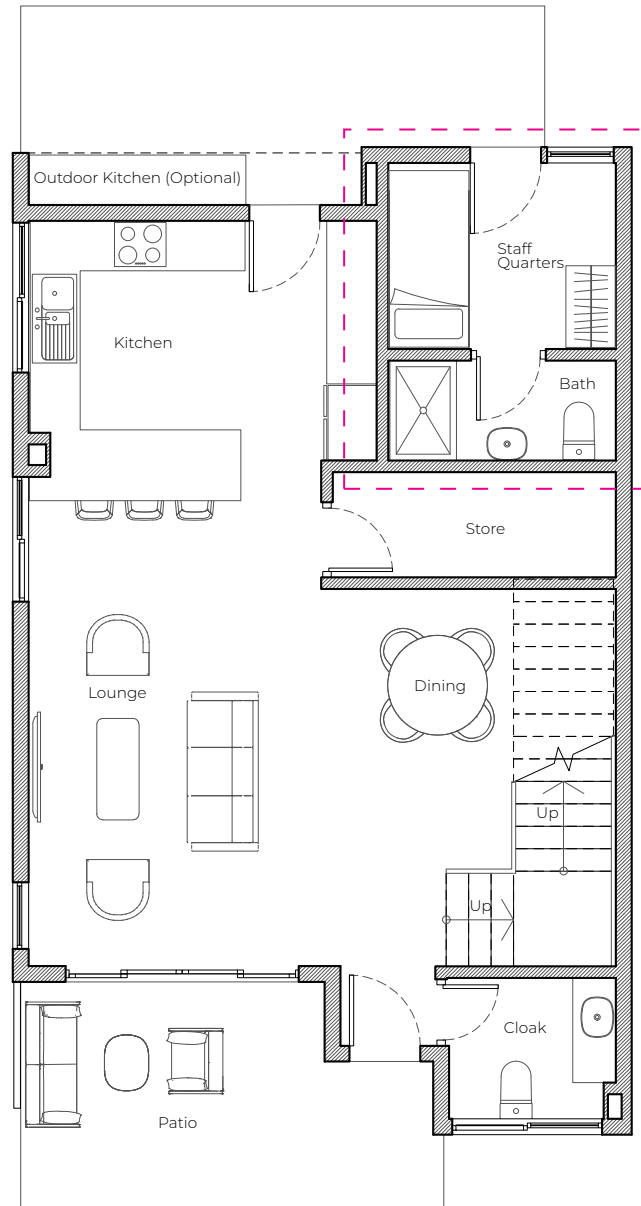


Roof Terraces for First and Secon Floor Apartments

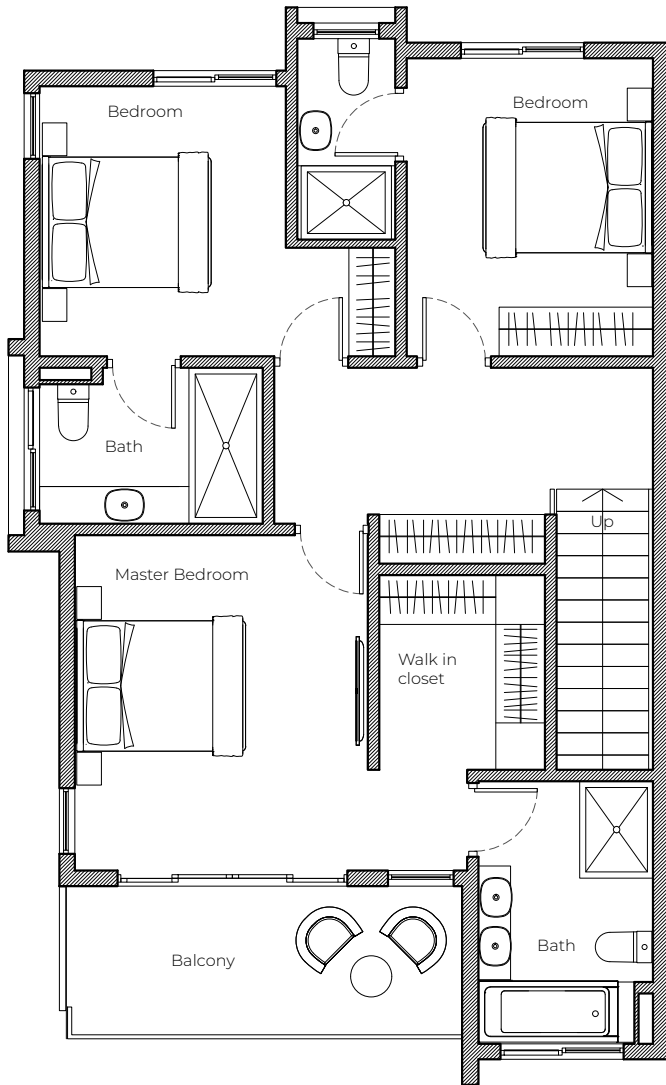
THREE BEDROOM TOWNHOMES
(176m²)



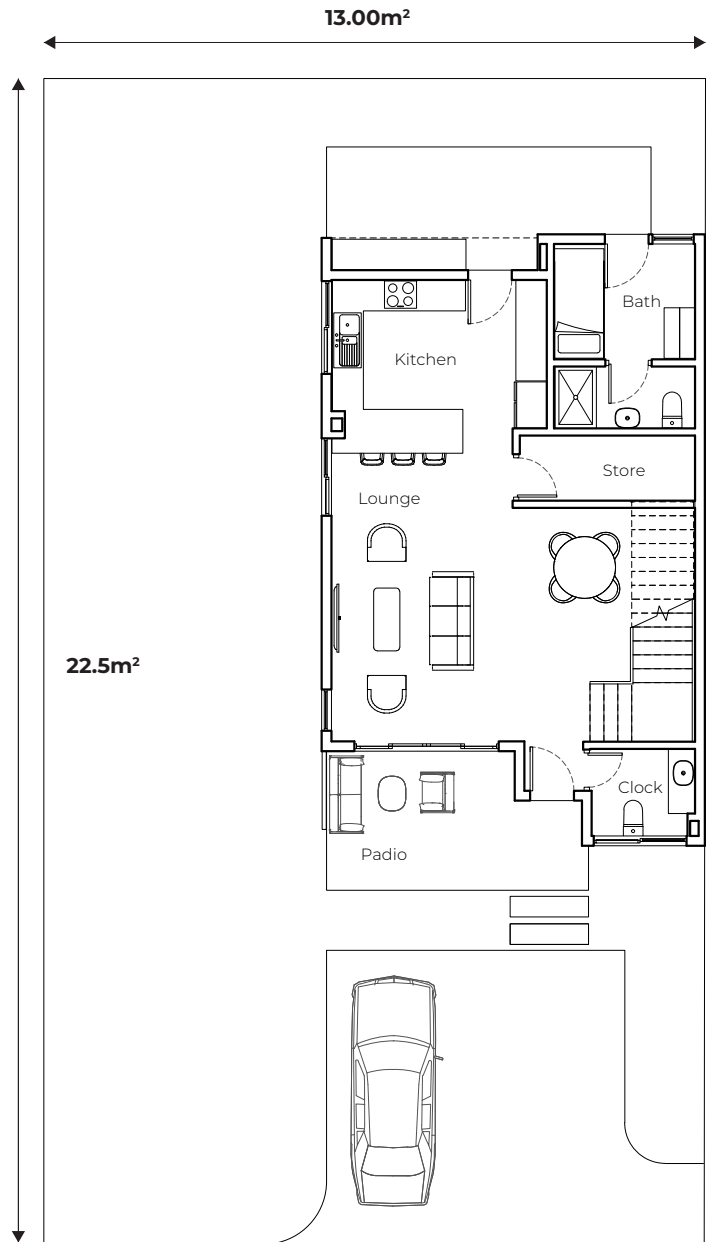
Ground Floor (with Scullery)



Ground Floor (with Domestic Staff Quarters)

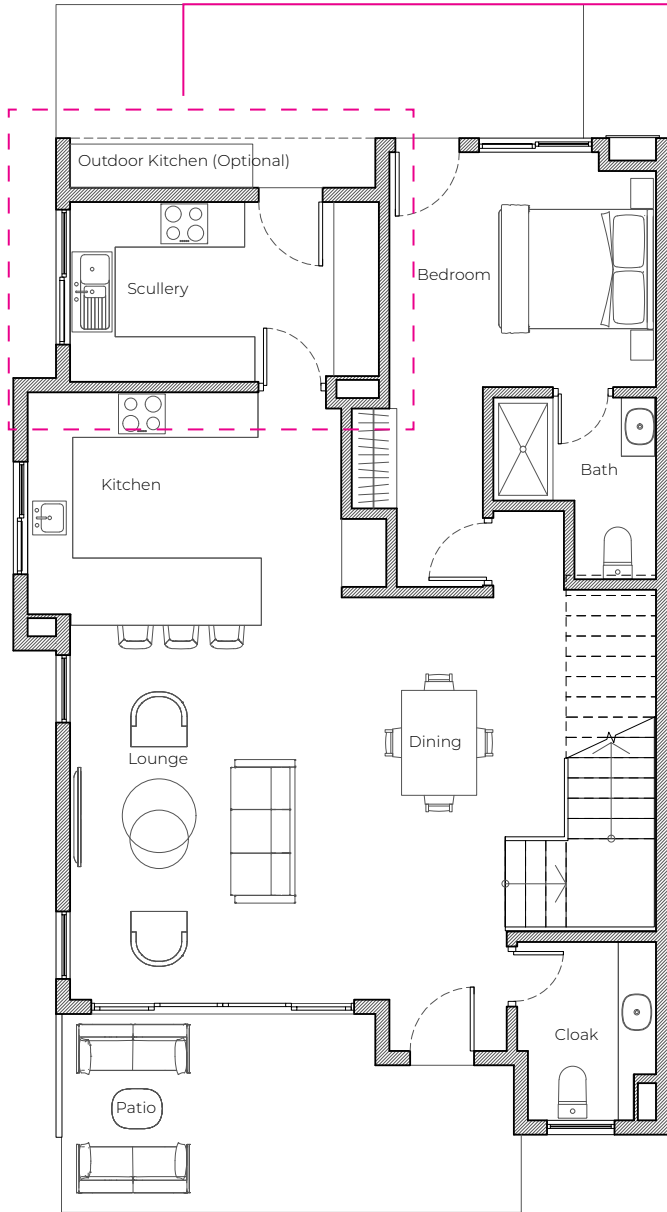


First Floor

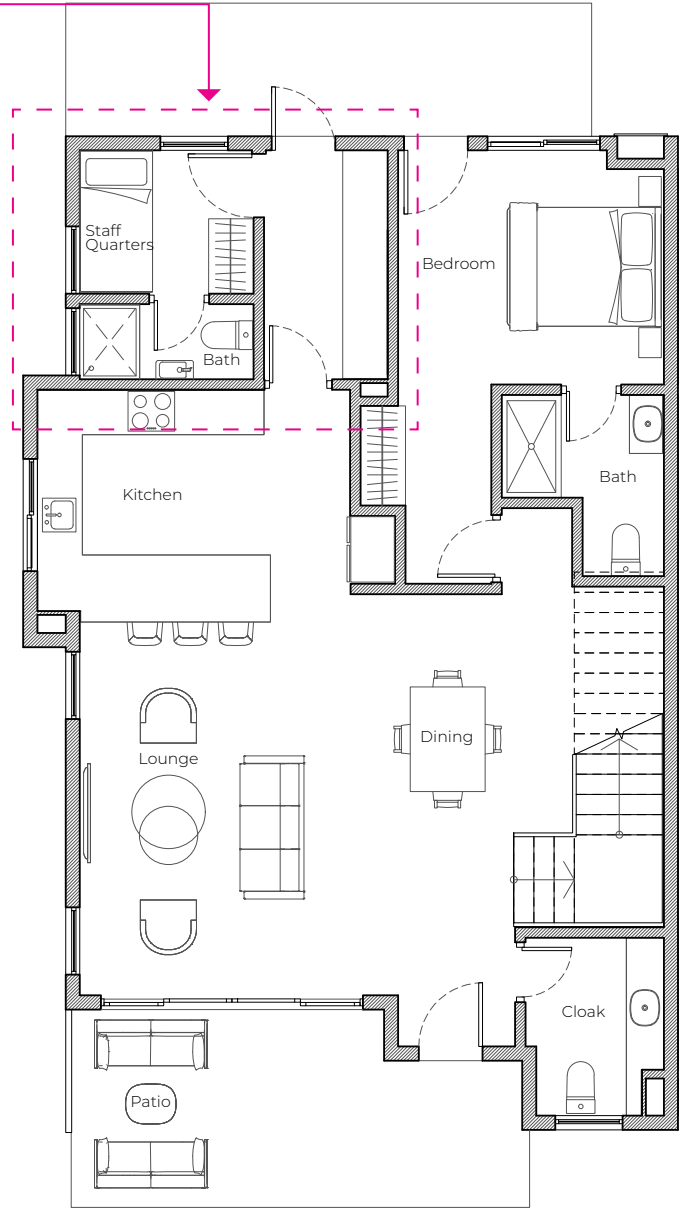


Plot Size -292.5m²
Garden Area -150.5m²

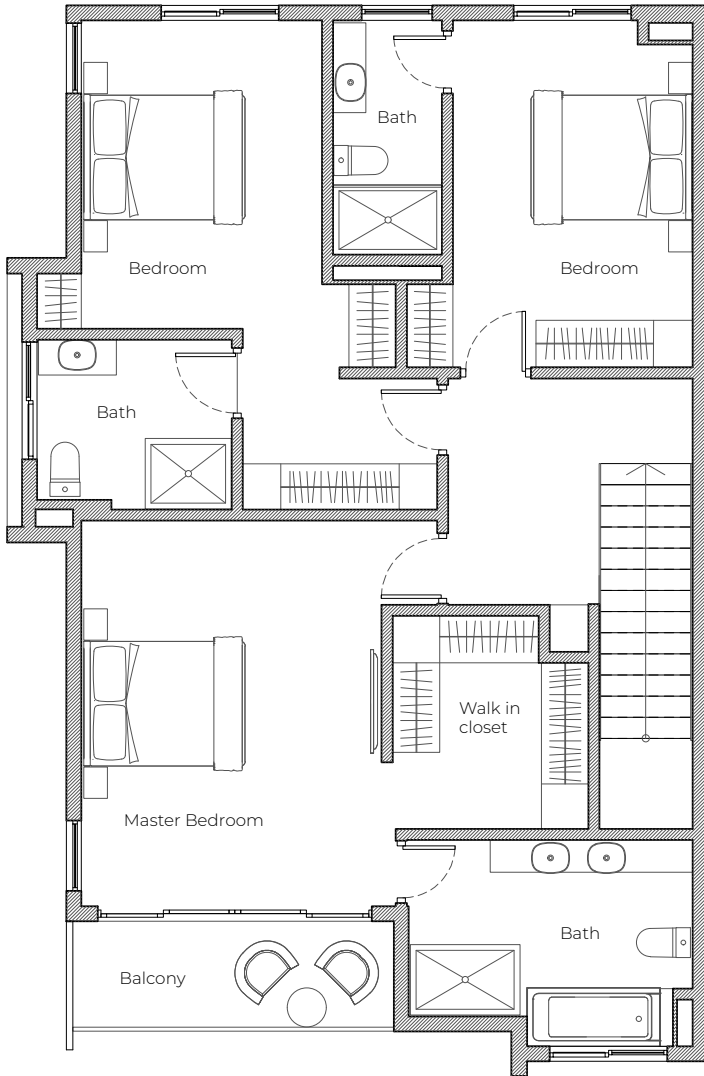
FOUR BEDROOM TOWNHOMES (224m²)



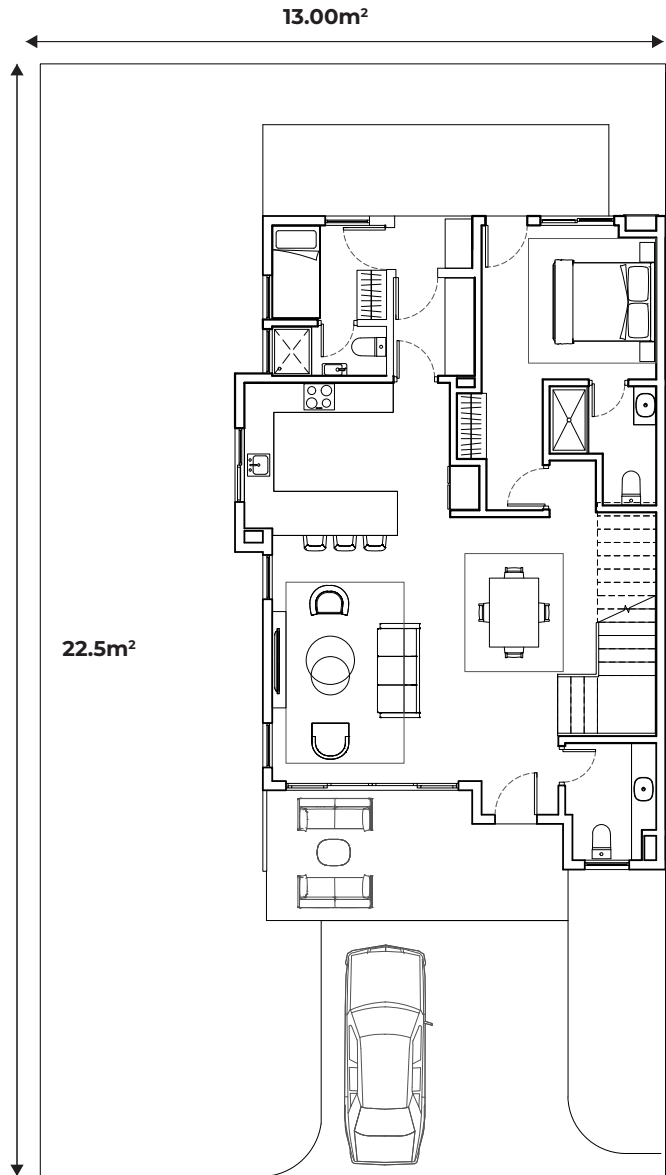
Ground Floor (with Scullery)



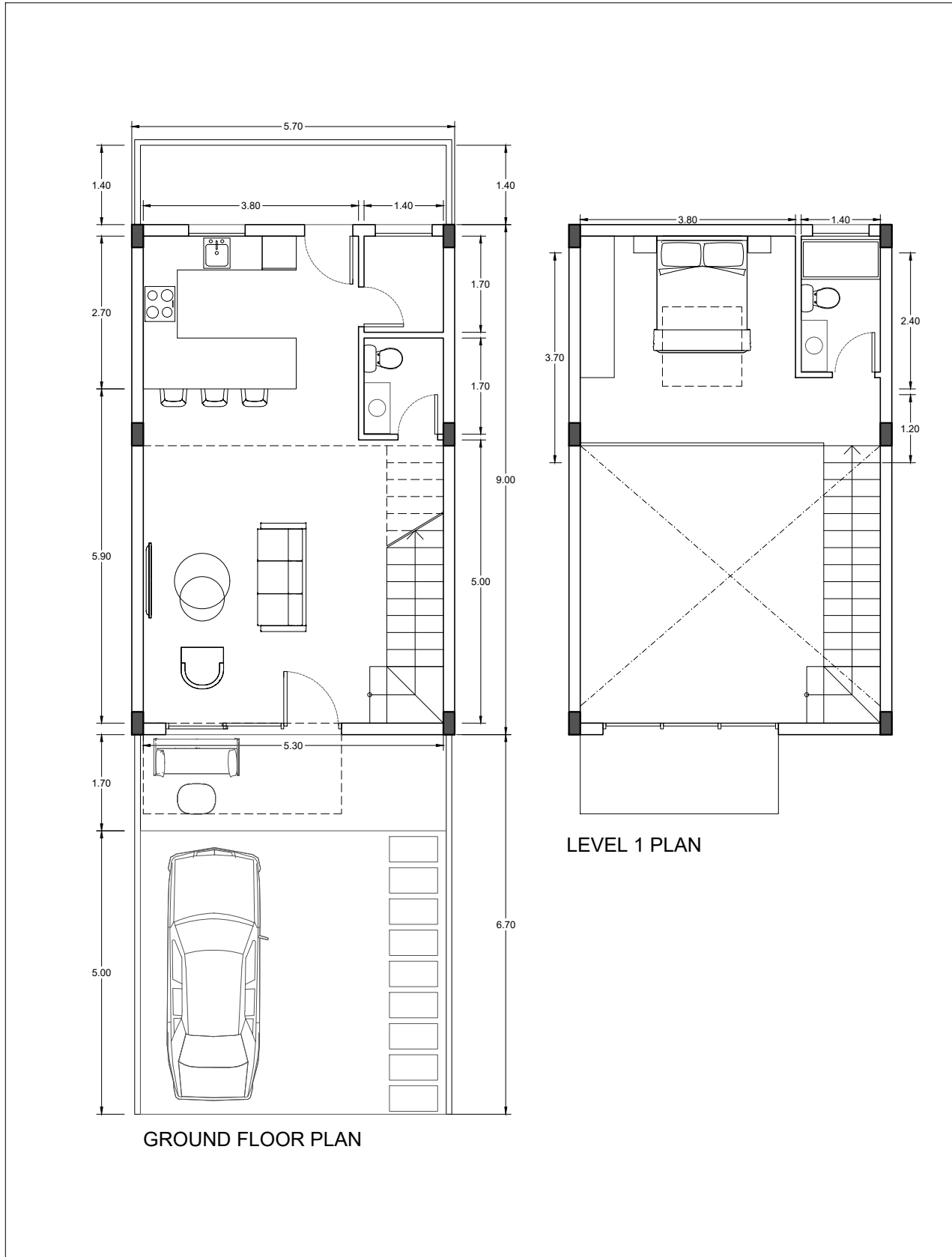
Ground Floor (with Domestic Staff Quarters)



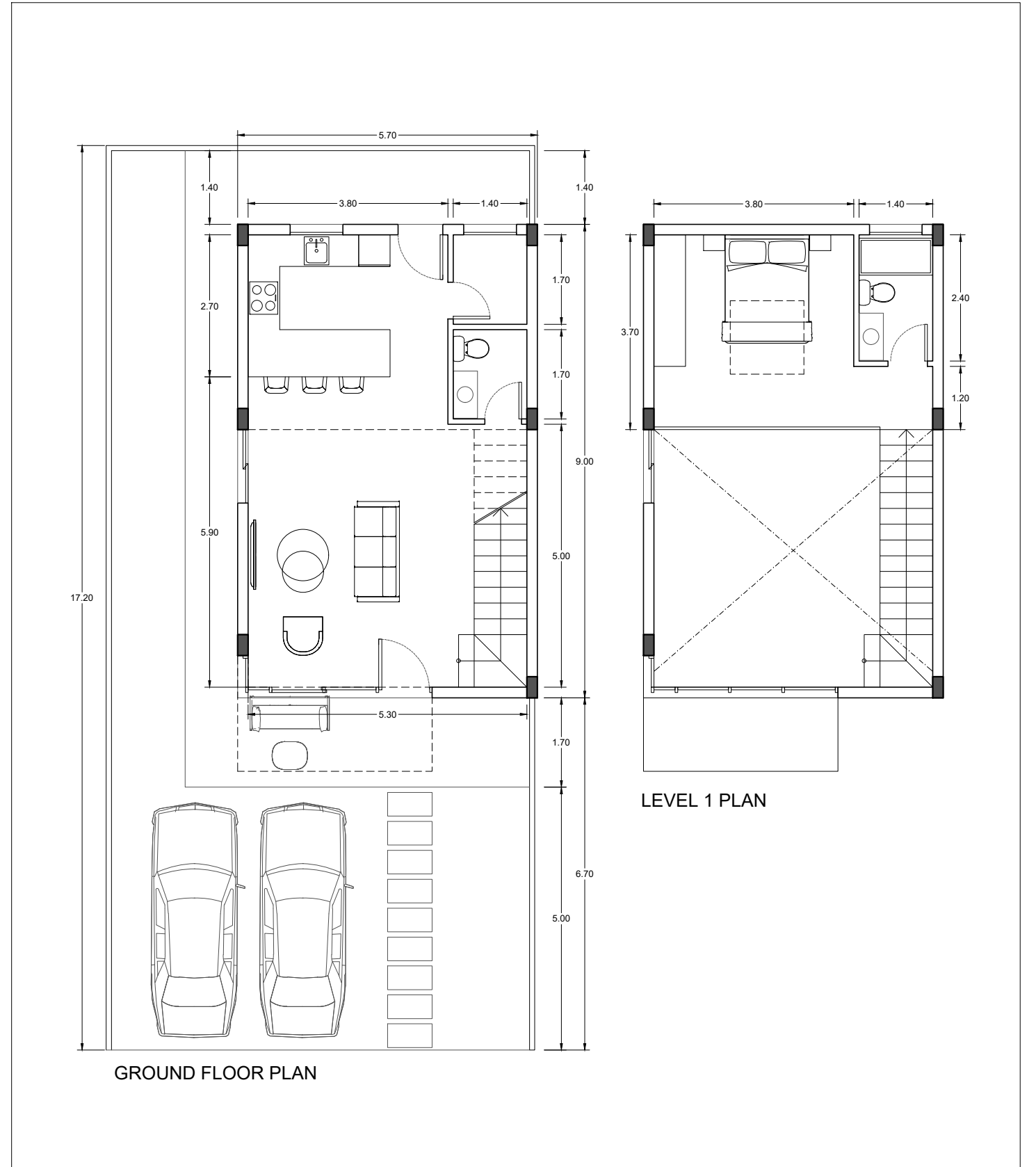
First Floor



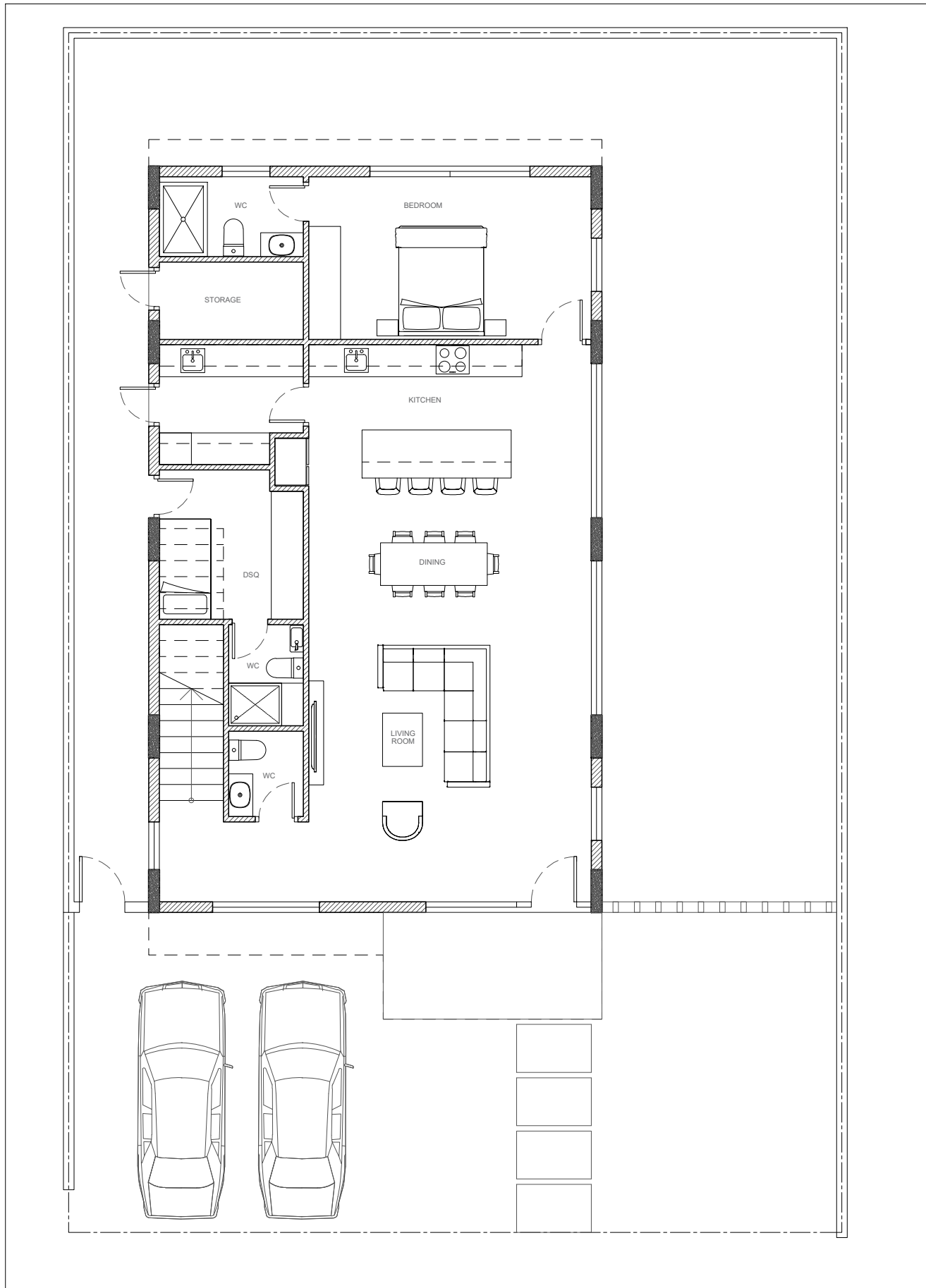
**Plot Size -292.5m²
Garden Area -135m²**



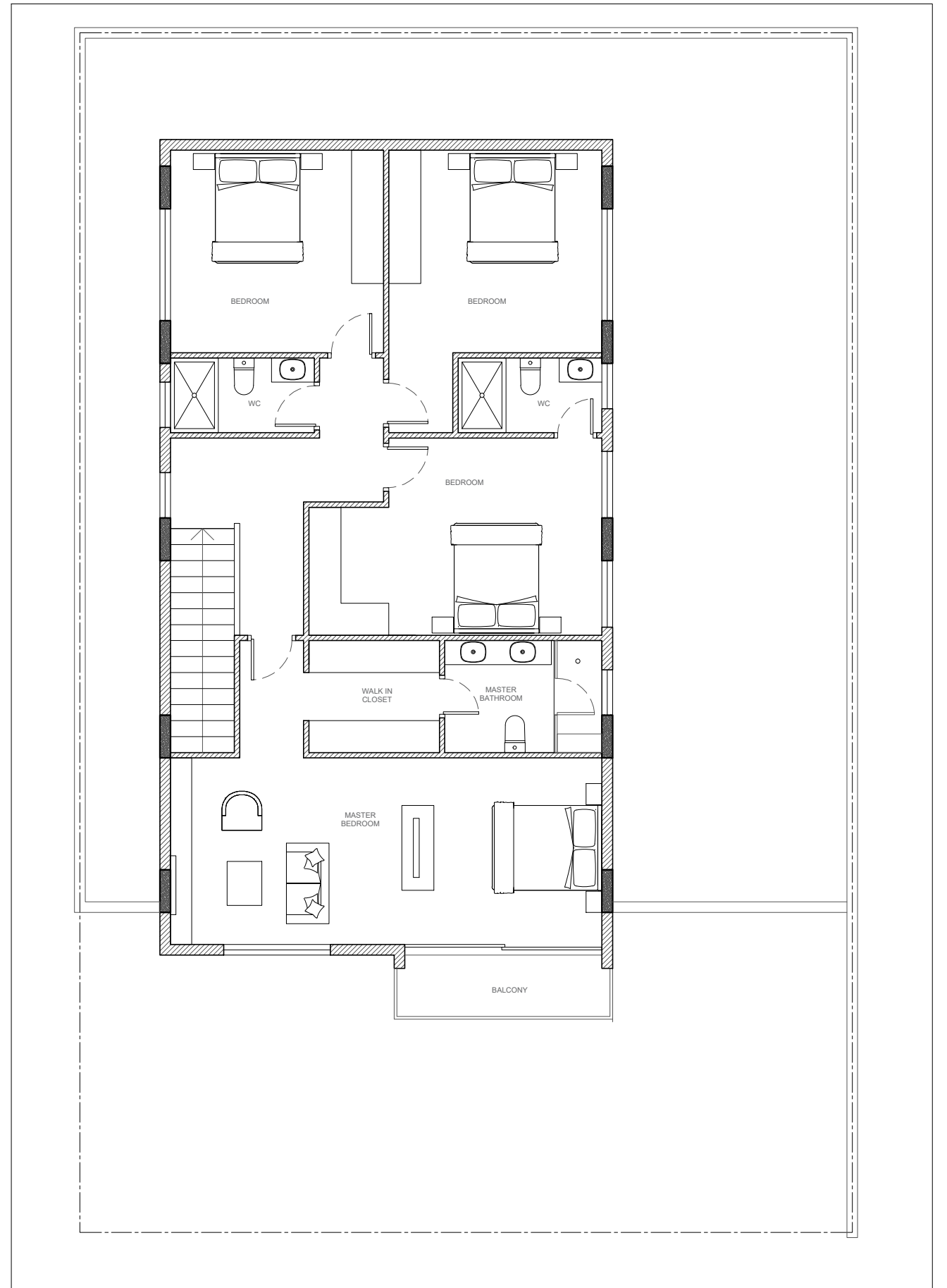
CENTRAL UNIT



CORNER UNIT



GROUND FLOOR PLAN



LEVEL 1 PLAN